

Essential Components of ESF Planning

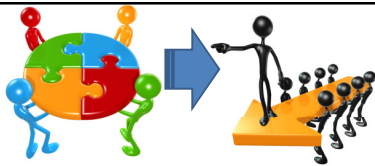
DEMEx Prep Workshop
Interagency Communication and Coordination

Disaster Response Framework



- **Strategy** for Human Security to provide a unified response to disasters and emergencies at national, state, district levels.
- **Incident Management System** comprehensive, national approach to incident management.
- **Incident Response System (IRS)** "a systematic tool used for the command, control, and coordination of emergency response"
- **Coordinating structures** for implementation at any level and at any time for local, state, and national emergency or disaster response.
- ESFs to deliver on all 4 phases of emergency management

What is ESF?



Emergency Support Functions (ESFs) is the **grouping** of governmental and certain private sector **capabilities** into an **organizational structure** to provide support, resources, program implementation, and services that are most likely needed to save lives..... protect property and the environment, restore essential services and critical infrastructure, and help victims and communities return to normal following domestic incidents.

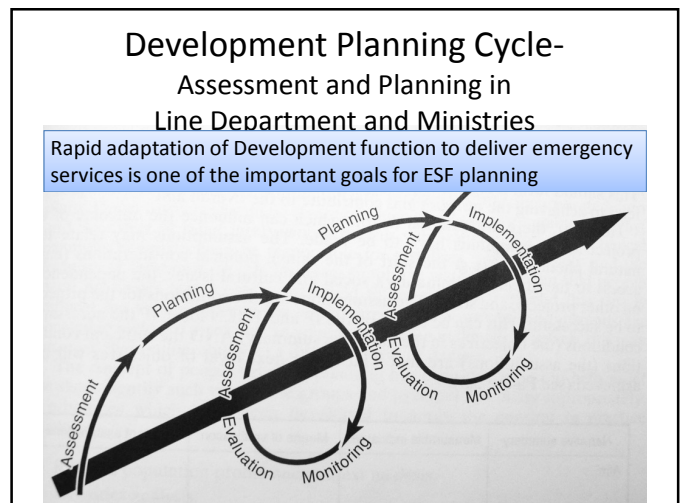
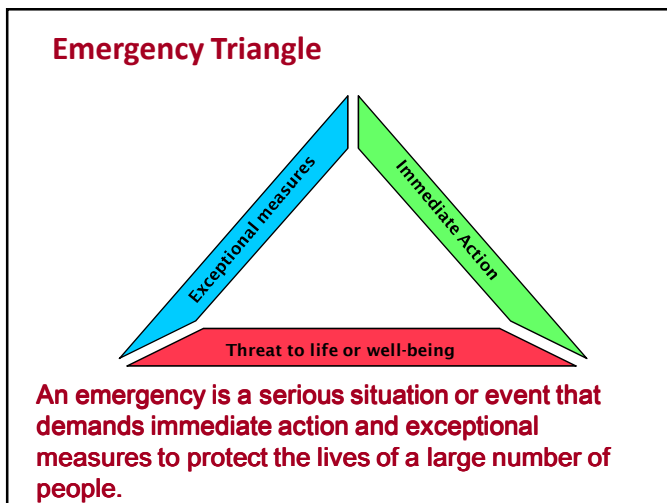
Emergency Support Function

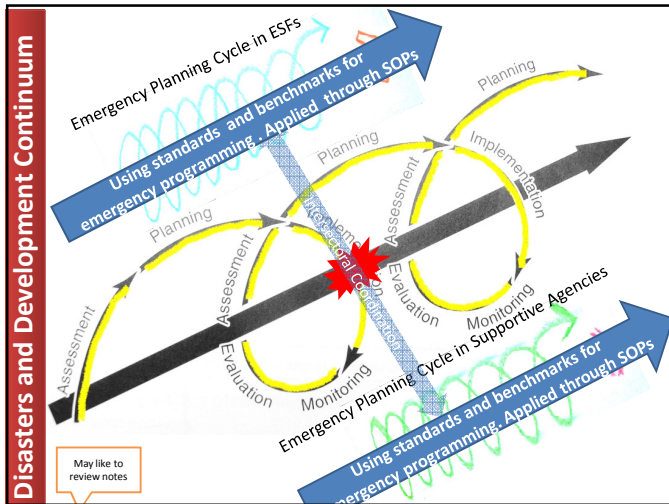
- ESF #1 - Transportation
- ESF #2 - Communications
- ESF #3 - Public Works and Engineering
- ESF #4 - Firefighting
- ESF #5 - Emergency Management
- ESF #6 - Mass Care, Emergency Assistance, Housing, and Human Services
- ESF #7 - Logistics Management and Resource Support
- ESF #8 - Public Health and Medical Services
- ESF #9 - Search and Rescue
- ESF #10 - Oil and Hazardous Materials Response
- ESF #11 - Agriculture and Natural Resources
- ESF #12 - Energy
- ESF #13 - Public Safety and Security
- ESF #14 - Long-Term Community Recovery
- ESF #15 - External Affairs



ESF Framework for Delhi (Source DDMA)			
ESF	Function	Coordinator	Members
ESF1	Communication	MTNL	NIC, Police, Revenue Wireless, Private Telecom
ESF2	Evacuation	Police Department	Army, Health Dept, Civil Defence, Delhi fire Service, NCC
ESF3	Search and Rescue	Secy. Home	Fire Deptt, Police, Civil Defence, Army
ESF4	Medical Health/Trauma	Secy. Health	Major Hospitals, CATS, St. John Ambulance, Civil Defence
ESF5	Equipment Support	Secy. Urban Development	MCD, PWD, NDMC, Cantt. Board, DDA, JAL Board
ESF6	Helplines, Warning Dissemination & coordination Media coverage	Pr. Secretary (Revenue/Disaster Management)	All Emergency Support Functionaries (ESFs), Media Agencies

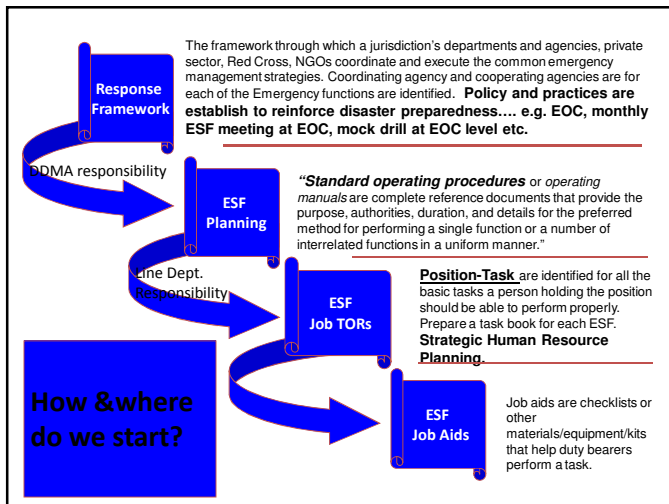
ESF Framework for Delhi – Cont'd			
ESF	Function	Coordinator	Members
ESF7	Drinking Water	CEO, Jal Board	DJB
ESF8	Electricity	Secy. Power	Transco, Power Companies (NDPL/BSES)
ESF9	Relief (Food and Shelter)	Pr. Secretary (Revenue/Disaster Management)	Civil Supplies Corporation, Civil Defence, Volunteer Organisations
ESF10	Debris and Road Clearance	Commissioner, MCD	PWD, NDMC, Cantt. Board, DDA, MES, CPWD
ESF11	Law and Order	Commissioner, Police	Civil Defence, Home Guards
ESF12	Transport	Secy. Transport	DTC, DMRC





Priorities for non emergency time

- SOPs for operation in exceptional circumstances like emergencies.
- Standards and benchmarks for emergency programming e.g. Sphere, CCC etc.
- System to rapidly organize surge capacity; **strategic human resource planning**
- System to collect, analyze and provide information to facilitate emergency decision making; **information management**
- Prepositioning of emergency supplies/kits as per sectoral requirements.
- System to address in-time learning needs of the staff and emergency programmes.
- Sectoral interagency contingency plan to address various scenarios.




State and District Emergency Operations Center (EOC) with appropriate staffing.....

- After notification of ESFs, Deliver on three function of:
- Multi-Agency Coordination and Communication
 - Resource Centre
 - Facilitation



Each Emergency Support Function initiate a process for preparation of SOPs



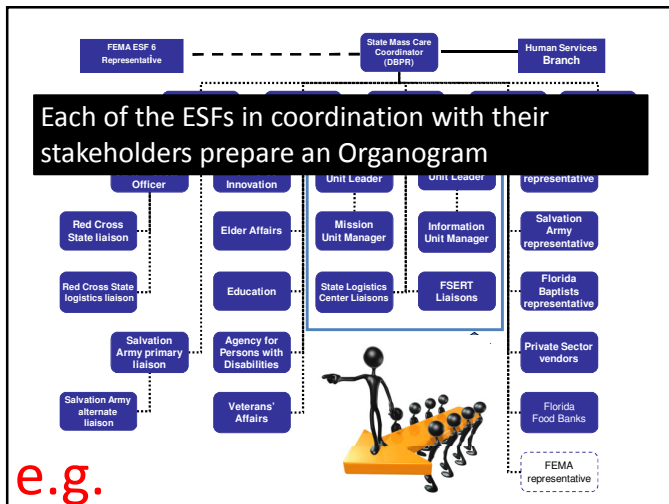

Microsoft Word Document

Each Emergency Support Function to:

Enumerate function areas, protocols, systems and sub-systems that will help ESF deliver adequately on its role and responsibility. E.g.


ESF #8 involves assistance in identifying and meeting the public health and medical needs of victims of major disasters or public health and medical emergencies. This support is categorized in the following **functional areas**:

- Assessment of public health/medical needs
- Public health surveillance
- Medical care personnel
- Medical equipment and supplies
- Patient movement
- Hospital care
- Outpatient services
- Victim decontamination
- Safety and security of human drugs, biologics, medical devices, veterinary drugs, etc
- Blood products and services
- Food safety and security
- Agriculture feed safety and security
- Worker health and safety
- All hazard consultation and technical assistance and support
- Mental health and substance abuse care
- Public health and medical information
- Vector control
- Potable water/wastewater and solid waste disposal, and other environmental health issues
- Victim identification/mortuary services
- Veterinary services.
- Federal public health and medical assistance consists of medical materiel, personnel, and technical assistance.



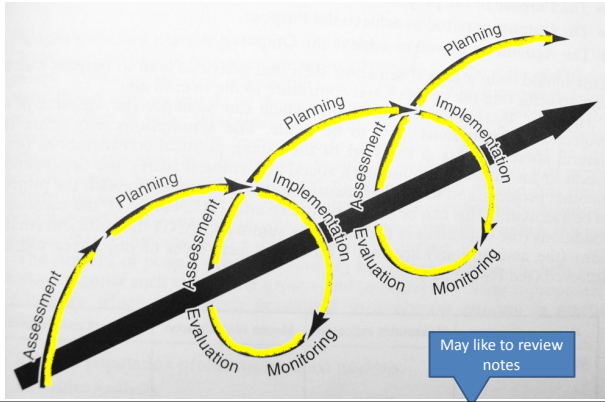
Start Responding in a structured manner to all four Phases of Emergency Management

- Mitigation
- Preparation
- Response
- Recovery



16

Risk Aware Development Planning- DRR mainstreamed



Thank you

